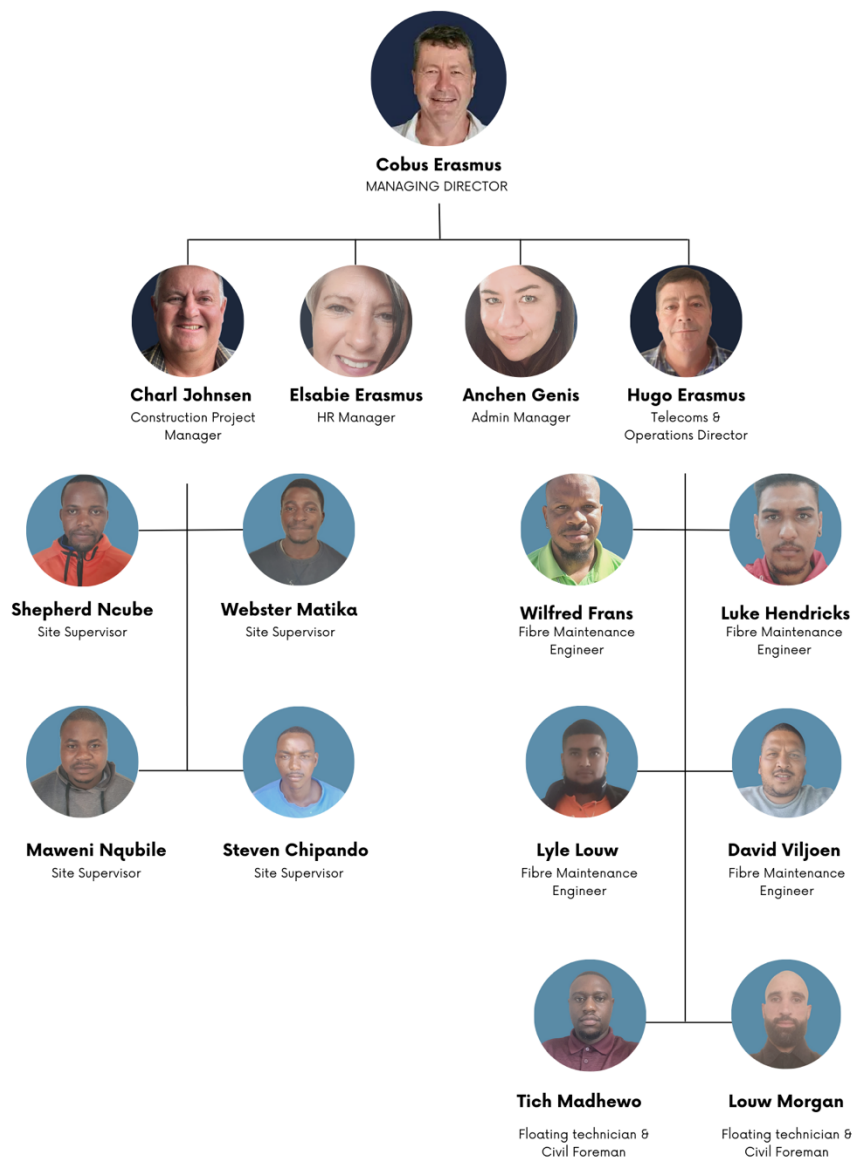




COMPANY PROFILE

COMPANY STRUCTURE





HISTORY

Hardwood Investments (Pty) Ltd (trading as HRW Property Group) is a multi-disciplinary company founded in 2015 by Cobus Erasmus. The company provides construction and telecommunications services and is based in Stellenbosch in the Western Cape.

The owner of HRW Property Group has extensive experience in the construction industry.

After extensive market research, it was determined that there is a gap in the construction/telecommunications industry for mid-sized projects and that the projects need to be of the same standard as the larger projects. The company's biggest challenge is to use the best tradesmen at the most cost-effective rates.

The company also believes that substandard materials should not be used as this compromises the longevity and quality of workmanship of any project.

The owner personally supervises of all tradesmen/contractors and all materials are also inspected by HRW Property Group.

HRW Property Group provides a turnkey solution for all construction and telecommunications projects.

ETHICS

In the interest of our personnel and our customers, health and safety are of paramount importance and are therefore enforced on a daily basis.

Well-trained personnel with quality skills are essential to the core of our business.

Our employees are dedicated, disciplined, well-mannered, have a good demeanour, and possess an excellent understanding of the scope of work, and a high level of communication skills. They share our passion for the industry in which we operate.

VISION

We see ourselves as a highly qualified and cost-effective company with specialised skills.

We relentlessly strive for excellence in all tasks undertaken and strive to provide a service of outstanding quality through knowledge, skill and passion for the industry in which we operate.

MISSION

Our goal is to become a leading service provider in the telecommunications and construction industry by offering a level of service, quality and excellence that cannot be matched by any other competitor in the field.



DIVISIONS WITHIN THE GROUP

FIBRE SPLICE COMMUNICATIONS & SMART CHOICE RECRUITERS

TELECOMMUNICATIONS DIVISION

HRW Property Group has acquired Fibre Splice Communications & Smart Choice Recruiters to expand its portfolio and services to the residential, commercial and industrial markets that fit within its current portfolio.

Hugo Erasmus of Fibre Splice Communications & Smart Choice Recruiters has joined HRW Property Group as Director of Telecommunications and Operations and will use his extensive knowledge of the fibre optics industry to lead this division.

COMPANY PROFILE

HISTORY

Hugo Erasmus founded Fibre Splice Communications in May 2007 & Smart Choice in April 2003, and since its inception the company has completed several large contracts. This has led to the company playing an important role in the fibre industry.

In 2007, the company was registered as Fibre Splice Communications and became even more involved in specialised contract work in the telecommunications and fibre optic industries.

PREVIOUS CUSTOMERS INCLUDE:

- S I Construction for Telkom
- Superway for Telkom
- LA Cables for Telkom
- Motata for Telkom, Metrorail & Neotel
- Optic 1 for Eskom (opgw,adss)
- Lz construction for Huawei
- Hezeki for Neotel
- Major Matic for Neotel & Ericsson (Sentec).
- Gio Construction for Telkom, Vodacom, MTN & DFA.
- MCT for Vodacom, MTN, Cell C & DFA.
- Tappan's Electrical for Vodacom
- Avatar for Polokwane Water and Groblersdal Water
- Injani for Prasa
- KCGC for Vodacom



- FTTH: Various estates in Western Cape
- FTTB: Voda World
- FTTB: Greenstone Mall
- Universal Projects for Vodacom
- Veatel (frog foot)
- FTTH: Tableview
- FTTH: Fishoek
- Link Africa
- FTTH: Fishoek
- Proef (Light Struck)
- FTTH: Paarl
- FTTH: Hermanus
- IT Comms
- Vuma Tel Mitchelsplain project
- GB Tell
- King Williams Town (Frog foot)
- Eco Matrix
- FTTH: Various projects in Western Cape
- Various MDUS
- Power Fibre (Octotel) various FTTH projects in Western Cape

EXPERIENCE

- Preparation of different types of fibre cable
- Preparation of different types of join closures
- Splicing of different types of fibre (SM G 652, G 655, G 656 G657 and MM)
- OTDR Pre & Post-test (1310 1550 1625)
- Power and Light source meter tests
- Final bi-directional tests according to international standards
- Preparation and installation of different types of ODF'S, OMDF' Patch panels, Lisa cabinets and several glass cabinets according to each service provider's specification
- Installations of Z-screen cables, test and patch panels
- Floating of micro and normal types of cable
- DIT before cable is being floated
- Installation of high-pressure couplings
- Minor and major civil works
- Turnkey projects
- We cover a broad spectrum of communication, copper, and fibre work



COMPLETED PROJECTS

SUB-CONTRACTED TO:

LA CABLES:

Pretoria - various projects

Witbank

Cape Town - various projects including;

Mitchells Plain

Paarl

Riversdal

Waenhuiskrans

SL KONSTRUKSIE:

Pretoria - various projects

Witbank - various projects

Klerksdorp - various projects

Marble hall

SUPERWAY:

Klerksdorp - various projects

Wolmaranstad

Pretoria

Johannesburg



- MOTATA:** Pietersburg
Cape Town (Metrorail)
Neotel various projects
Johannesburg
Pretoria
- OPTIC 1:** 765 kv power line between Stilfontein and
Hoopstad (OPGW, ADSS)
Potgietersrus 33kv line to PP Rust
- HEZEKI:** Neotel
Johannesburg
Sandton
Randburg
Telkom (Hamanskraal)
- MAJOR MATICS:** Neotel
Johannesburg (Area)
Pretoria (Area)
- LZ CONSTRUCTION:** Huawei (MTN)
New lands – New Doornfontein fix up all faults
Redo joint and cable break
14th Avenue – RDG Fix up faults and redo
Jointing
Germiston cable break redo patch panel



GIO CONSTRUCTION: Telkom, MCT

Johannesburg

Pretoria

Sandton

Durban Building of ring P1 to P8 for (MCT, VODACOM ,DFA)

Durban long haul between Umhlanga and Mtinzini.

HIGHLIGHTS:

- Civic Data for Discovery new head office Sandton
- BCX Centurion
- Voda World
- Greenstone Mall



SEALTEK CAPE

WATERPROOFING DIVISION

COMPANY PROFILE

HISTORY

HRW Property Group acquired a 50% share in Sealtek Cape Advanced Coating Technologies in 2020 and exclusively uses their products for all waterproofing projects. The opportunity arose to establish a reputable waterproofing company in the Western Cape that utilises new technologies that are environmentally friendly, durable and offers guarantees.

We are the only suppliers and distributors in the Cape Province. We also have branches in the Eastern Cape.

Sealtek Advanced Coating technologies has been in the waterproofing industry for the last 15 years and has its factory in Johannesburg. Sealtek has been in the Western Cape Province for the last 5 years.

SERVICES

- Leak Detection
- Waterproofing of concrete slabs
- Waterproofing of roofs
- Waterproofing of underground walls
- Waterproofing of basements
- Painting

PRODUCTS

- Asbestosflex
- Hydroflex
- Hydroblock
- Armtex
- Repellam
- Polycreed
- Roof Renew
- Damp end
- Weathercoat



OUR CUSTOMERS

- Wolwedans Vineyards
- Sa Rooibos
- The Blok Property Developers
- Marite Property Administrators
- La Clemence Retirement village
- Dorp Street Properties
- Water's Edge development in Big Bay
- Environ Skincare
- Various domestic projects completed (references available on request)

EQUIPMENT

- 3 x Fujikura's 50's complete splicing machines
- 3 x Mactester 730c iolm
- Power & light source meter
- Tool sets
- 3 x vehicles' (closed environment for splicing)
- All equipment associated with splicing of fibre
- 2 x Keaser Compressor and Micro and Nano floating machine (Air stream)
- 1 x Plumjet
- 2 x Vehicle's for floating
- 1 x high pressure spray machine
- 2 x high pressure cleaners
- Various electrical tools associated with the building industry
- Various Step ladders
- 1 x high pressure water pump

VEHICLES

- 4 x Enclosed Ford Transit Panel vans
- 1 x Ford MWB Panel van
- 1 x Ford Single cab – enclosed canopy
- 1 x Isuzu Single cab – enclosed canopy
- 1 x Chev utility
- 2 x Ford Ranger Super Cab
- 2 x Trailers
- 1 x 2000L Water tank



ADDITIONAL RESOURCES

- Our fleet includes vehicles for larger types of projects
- Teams for small civil projects
- Building of manholes placing hand holes
- Laying of pipes and trenching